

ENTREMAT^{IC}

WLKP Wireless Keypad



Installation / Programming Instructions

Manufactured by:
GTO Access Systems, LLC
(844) 256-3130
www.gtoaccess.com

DESCRIPTION

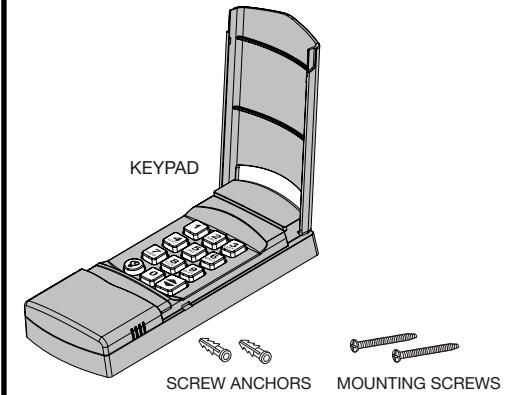
This wireless keypad is a wireless radio control designed for use with automatic garage door and gate operators. The radio format provides unparalleled security with more than a million different codes. In operation, the user enters their unique code on the unit's keypad (1 to 6 digits long) and presses the button to activate the door operator. For up to 30 seconds after the last activation, the keypad can be re-triggered by simply pressing the button again. This allows the user to stop or reverse the opener quickly, without having to re-enter their code.

The keypad has built-in keypad lighting for use at night or in dark areas. The clear silicone keys are backlit with a pleasing blue glow. By pressing the button first, before entering their code, the user can light up the keypad. Pressing the button at any time will light up the keypad.

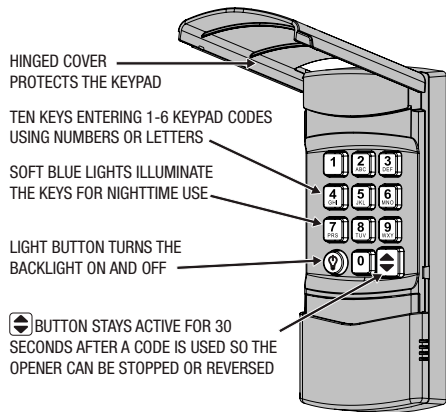
The keypad lockout timer will disable the keypad after 10 activations. The keypad must remain idle for 30 seconds before new attempts.

The receiver is programmed by sending a signal from the user's transmitters that stores the transmitter's code into the receiver's memory. The receiver will retain its memory even without power and will only activate from these "memorized" transmitters. Each keypad code can be considered a different transmitter. Each receiver can remember a maximum of 10 transmitter codes. Any combination of portable transmitters and keypad codes up to the maximum number can be entered.

COMPONENTS



KEYPAD FEATURES



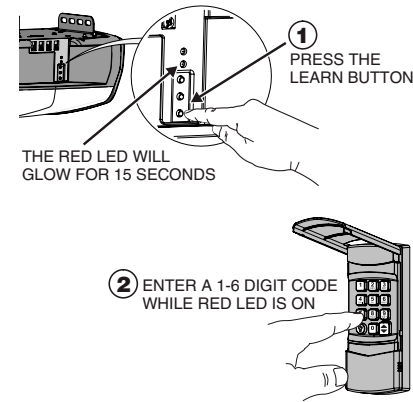
PROGRAMMING OPERATORS

- 1 Refer to the instructions provided with the garage door opener to set it into "learn" mode.
Press the opener's LEARN BUTTON for 1 second and release. The opener should BEEP and the LIGHT should BLINK once. The RED LED will remain lit in Learn Mode for 15 seconds.
- 2 While the RED LED is lit, enter a 1-6 digit code into the keypad. Then PRESS and HOLD the keypad's key until the opener BEEPS and the light BLINKS once.

Repeat Steps 1 & 2 for any additional keypad codes.

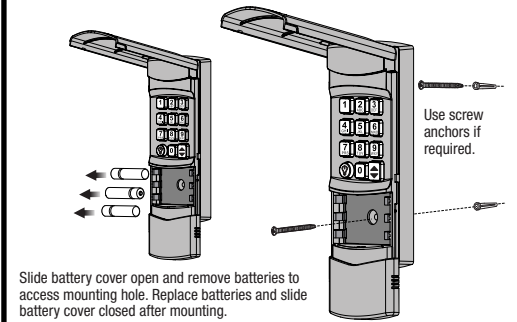
DELETING A KEYPAD CODE

To delete a keypad code that you no longer want follow the same steps above. The opener will recognize the code and delete it from memory. The RED LED and LIGHT will blink 4 times to show the code was successfully deleted.



WALL MOUNTING

MOUNT THE KEYPAD IN CLEAR VIEW OF THE DOOR WITH THE TWO SCREWS SUPPLIED



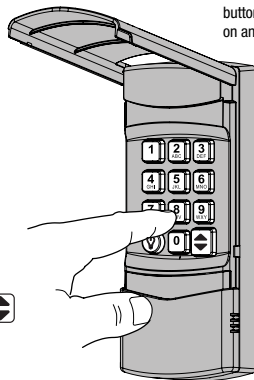
KEYPAD OPERATION

DAYTIME OPERATION

- 1 ENTER THE KEYPAD CODE
 - 2 PRESS
- 1-6 DIGIT KEYPAD CODE THAT WAS ENTERED INTO OPENER

NIGHTTIME OPERATION

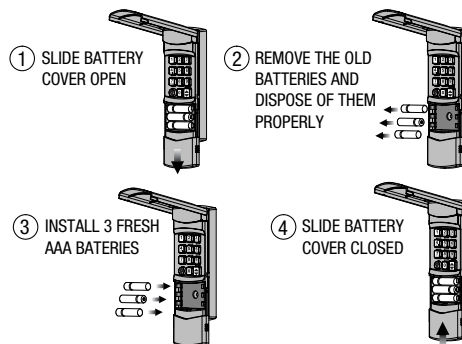
- 1 PRESS (LIGHTS KEYPAD)
 - 2 ENTER THE KEYPAD CODE
 - 3 PRESS
- 1-6 DIGIT KEYPAD CODE THAT WAS ENTERED INTO OPENER



LIGHT OPERATION

Press the LIGHT button to turn backlight on and off.

CHANGING BATTERIES



Follow the steps in the diagram and use caution to keep batteries away from children.
Operation requires 3 AAA alkaline batteries. Properly dispose of old batteries. Many electronic stores and supermarkets have battery recycling bins. Alkaline batteries can be safely disposed of with normal household waste. Never dispose of batteries in fire because they could explode.

LIMITED WARRANTY

This product is warranted against defects in material and workmanship for one year from the date of purchase. The Warranty Expiration Date is labeled on the product. This warranty applies to wholesale customers who buy direct from Entrematic distribution channels. Manufacturer does not warrant this product to consumers. Consumers should inquire from their selling dealer as to the nature of the dealer's warranty, if any. There are no obligations or liabilities on the part of the manufacturer for consequential damages arising out of or in connection with use or performance of this product or other indirect damages with respect to loss of property, revenue, or profit, or cost of removal, installation, or re-installation. All implied warranties, including implied warranties for merchantability and implied warranties for fitness, are valid only until Warranty Expiration Date as labeled on the product. This warranty is in lieu of all other warranties express or implied.

All products returned for warranty service require a Return Product Authorization Number (RPA#). Contact Technical Service at (844) 256-3130 for an RPA# and other important details.

IMPORTANT: Entrematic radio controls provide a reliable communications link and fill an important need in portable wireless signaling. However, there are some limitations which must be observed.

- For U.S. installations only: The radios are required to comply with FCC Rules and Regulations as Part 15 devices. As such, they have limited transmitter power and therefore limited range.
- A receiver cannot respond to more than one transmitted signal at a time and may be blocked by radio signals that occur on or near their operating frequencies, regardless of code settings.
- Changes or modifications to the device may void FCC compliance.
- Infrequently used radio links should be tested regularly to protect against undetected interference or fault.
- A general knowledge of radio and its vagaries should be gained prior to acting as a wholesale distributor or dealer, and these facts should be communicated to the ultimate users.

WARNING: Changes, modifications or adjustments not expressly approved by manufacturer could void the user's authority to operate this equipment. There Are No User Serviceable Parts.

NOTICE: This device complies with part 15 of the FCC rules and with Industry Canada license-exempt RSS standard(s). Operation is subject to the following two conditions: (1) this device may not cause interference, and (2) this device must accept any interference, including interference that may cause undesired operation of the device.

Le présent appareil est conforme aux CNR d'Industrie Canada applicables aux appareils radio exempts de licence. L'exploitation est autorisée aux deux conditions suivantes : (1) l'appareil ne doit pas produire de brouillage, et (2) l'utilisateur de l'appareil doit accepter tout brouillage radioélectrique subi, même si le brouillage est susceptible d'en compromettre le fonctionnement.