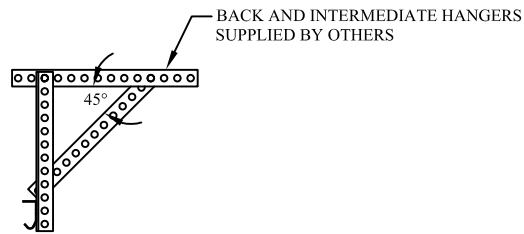
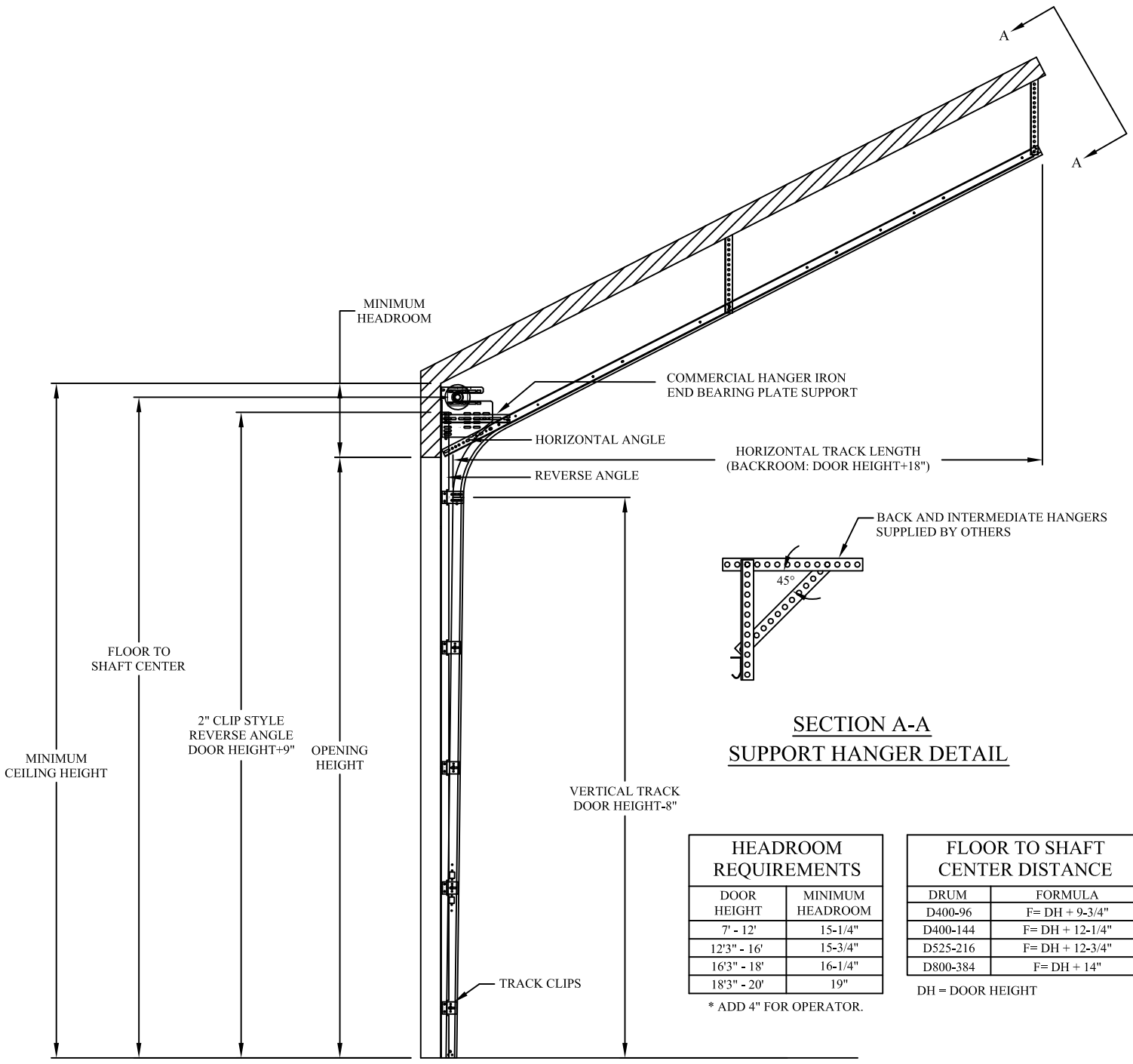


COMMERCIAL REVERSE ANGLE MOUNT STANDARD LIFT
WITH FOLLOW THE ROOF PITCH

ENTRE//MATIC



SECTION A-A
SUPPORT HANGER DETAIL

HEADROOM REQUIREMENTS	
DOOR HEIGHT	MINIMUM HEADROOM
7' - 12'	15-1/4"
12'3" - 16'	15-3/4"
16'3" - 18'	16-1/4"
18'3" - 20'	19"

* ADD 4" FOR OPERATOR.

FLOOR TO SHAFT CENTER DISTANCE	
DRUM	FORMULA
D400-96	F= DH + 9-3/4"
D400-144	F= DH + 12-1/4"
D525-216	F= DH + 12-3/4"
D800-384	F= DH + 14"

DH = DOOR HEIGHT

NOTE: CONTACT ENGINEERING DEPARTMENT FOR HORIZONTAL TRACK PITCH CUTTING INSTRUCTIONS.

STANDARD LIFT FOLLOW THE ROOF PITCH
ANGLE MOUNT TRACK SET DETAIL