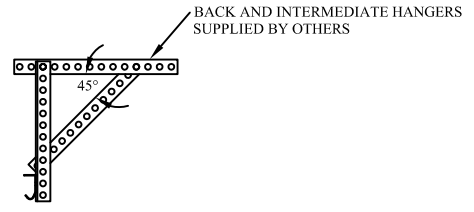
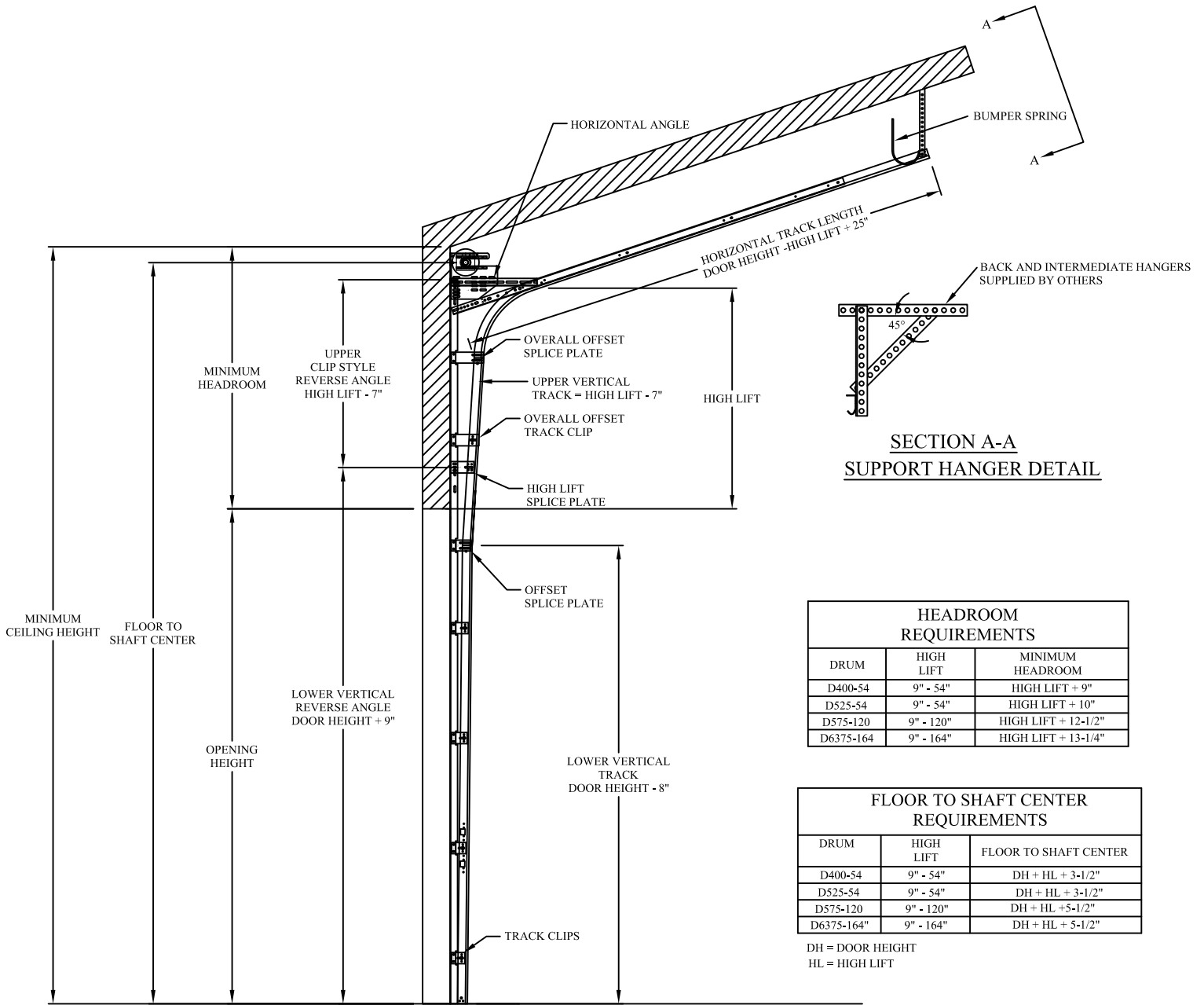


HIGH LIFT STANDARD FOLLOW THE ROOF PITCH TRACK SET DETAIL
 2" ANGLE MOUNT



SECTION A-A
SUPPORT HANGER DETAIL

HEADROOM REQUIREMENTS		
DRUM	HIGH LIFT	MINIMUM HEADROOM
D400-54	9" - 54"	HIGH LIFT + 9"
D525-54	9" - 54"	HIGH LIFT + 10"
D575-120	9" - 120"	HIGH LIFT + 12-1/2"
D6375-164	9" - 164"	HIGH LIFT + 13-1/4"

FLOOR TO SHAFT CENTER REQUIREMENTS		
DRUM	HIGH LIFT	FLOOR TO SHAFT CENTER
D400-54	9" - 54"	DH + HL + 3-1/2"
D525-54	9" - 54"	DH + HL + 3-1/2"
D575-120	9" - 120"	DH + HL + 5-1/2"
D6375-164"	9" - 164"	DH + HL + 5-1/2"

DH = DOOR HEIGHT
 HL = HIGH LIFT

HIGH LIFT ANGLE MOUNT TRACK SET DETAIL